

نقدم لكم بعض من المادة العلمية في صورة فيديوهات أو تدريبات على أن يستعين بها الطالب مع إتاحة المواقع العلمية المقررة من الوزارة من خلال أجهزة التابلت لمساعدتكم في اجتياز الامتحانات المقررة .

Unit three (inheritance of traits)

Chapter (1) Chromosomes and genetic information

Choose the correct answer:-

1- karyotype of a male human differs from that of the female in.....

a- chromosomes pair no (23).

b- chromosomes pair no (7).

c- chromosomes pair symmetry.

d- (a) and (c) together.

2- If the number of autosomes in an ovum is (x), the body cells contain.....

a-X.

b- 2X.

c- X+1.

d- 2X+2.

3- If the number of chromosomes in a human skin cell is (23) pairs, the number of autosomes in the sperm is

a-22.

b- 23.

c- 22pairs.

d- 23pairs

4- the ratio between the number of sex chromosome (X)in each of a boy arm muscle cell and a girl arm muscle cells isrespectively.

a-1:2

b- 1:1

c- 2:1

d- 1:3

5- The diploid cells divide mitotically to give cells.

a- diploid

b- haploid

c- tetraploid

d- (a) and (b)

5- The purple colored flowers appear in pea plant with two genotype which are

a- RR and rr

b- RR and Rr

c- RW andRR

d- Rr and rr

5- If the genotype of a son is (aa), the genotypes of the parents are

a- AA X Aa

b- AA and AA

c- Aa and aa

d- AA and aa

6- What are the genotypes of the gametes produced from a person whose genotype is (BBRr)?.....

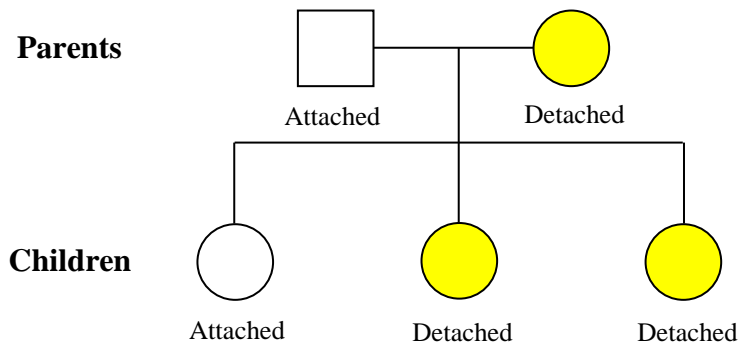
a- (BR) and(br)

b- (BR) and(bR)

c- (BR) and(Br)

d- (Br) and(bR)

7- The shape of the person's earlobes is determined by a single gene. This gene has dominant and recessive alleles. The allele for detached earlobes is dominant over the allele for attached earlobes. The following diagram shows the inheritance of earlobe shape in family:



What is the probability of the next child from the same parents to have detached earlobes?

a- 0%

b- 25%

c- 50%

d- 75%